

## Voice guided system control

The user should call the GSM module to control the alarm system or get information about its present status via a phone call. The module will answer with a greeting followed by a command to enter a PIN code and to press the hash key (#). The user will be informed about the status of the system and introduced to its control menu only if the PIN code is accepted, otherwise an error message will sound. Control of the system can be accomplished by following vocal commands of the system, entering numbers corresponding to a control command, and pressing the # key. For example: to arm the system - 1#, to disarm the system - 0#, to clear an alarm - 00#, and etc.

During an alarm the user might get a phone call from the GSM module, which will provide information about the alarm. Answering the phone call and hearing vocal information about the alarm will allow a user to choose from finishing the call by pressing 0#, or to control the system by entering the PIN code and pressing the # key. The module will keep calling if the user will hang up the phone without listening to its messages with options.

## Control with SMS commands

Begin SMS with a PIN code followed by a command. For example: **1111A** - where **1111** is user's PIN code and **A** is a command to arm the system. There must be space between each command. For example: **1111A B2** - where **1111** is user's PIN code, **A** - arm the system, and **B2** - bypass the 2nd zone command.

Alarm system control commands	
A?	Away arming. Example: 1111A - arm all partitions in <i>Away</i> mode, 1111A14 - arm 1st and 4th partitions.
AN?	<i>Night</i> arming. Example: 1111AN - arm all partitions in <i>Night</i> mode, 1111AN14 - arm 1st and 4th partitions.
AV?	<i>Max Away</i> arming. Example: 1111AV - arm all partitions in <i>Max Away</i> mode, 1111AV14 - arm 1st and 4th partitions.
AS?	<i>Stay</i> arming. Example: 1111AS - arm all partitions in <i>Stay</i> mode, 1111AS14 - arm 1st and 4th partitions.
D?	Disarm. Example: 1111D - disarm all partitions, 1111D14 - disarm 1st and 4th partitions.
C?	Clear alarm. Example: 1111C - clear alarm in all partitions, 1111C14 - clear alarm in 1st and 4th partitions.
O?	Turn on/off PGM output. Example: 1111O1 - turn on/off 1st output, 1111O1 O2 - turn on/off 1st and 2nd outputs.
I	Get system status. Example: 1111I .
B?	Bypass a zone. Example: 1111B1 - bypass 1st system zone, 1111B1 B2 - bypass 1st and 2nd zones.
BF?	Bypass a zone permanently. Example: 1111BF1 - bypass 1st system zone, 1111BF1 BF2 - bypass 1st and 2nd zones.
U?	Remove zone bypass. Example: 1111U1 - remove bypass from 1st system zone, 1111U1 U2 - remove bypass from 1st and 2nd zones.
F	Send SMS to a phone number via GSVx. Example: 1111F <i>phone number</i> Text message. <i>Phone number</i> in the text message must be entered in international format, "+" sign is added automatically. Example: 1111F404 Balance.
X	Used to send USSD command via GSVx. USSD is commonly used by prepaid GSM devices to query the available balance. Example: 1111X*131# - GSVx will send *131# command to GSM provider. The answer from GSM provider will be forwarded to the user's phone using SMS service.
CHANGE PIN ?	Change PIN. Example: 1111CHANGE PIN7859 - change user PIN 1111 to 7859.
RESTORE PIN ?	Restore factory default PIN code for a chosen user. Service mode must be enabled. Example: 1111 RESTORE PIN 2 - restore 2nd user's PIN to default (0002).
SERVICEYES	Enable service mode. Example: 1111SERVICEYES .
SERVICENO	Disable service mode. Example: 1111SERVICENO .

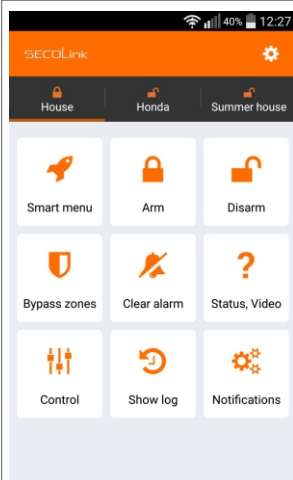
SMS commands for www.alarmserver.net	
BI	Get system BI number. Example: 1111BI .
REGISTER	Register the system on www.alarmserver.net. Example: 1111REGISTER .
SEND PROJ	Send the project to www.alarmserver.net. Example: 1111SEND PROJ .
RECEIVE PROJ	Get the project from www.alarmserver.net. Example: 1111RECEIVE PROJ .
SEND TECH	Send technical information to www.alarmserver.net. Example: 1111SEND TECH .
SEND LOG	Send the event log to www.alarmserver.net. Example: 1111SEND LOG .

Personal user settings	
SD?	Notification via SMS about the system disarming (SD1 - enable, SD0 - disable). Example: 1111SD1 .
SA?	Notification via SMS about the system arming (SA1 - enable, SA0 - disable). Example: 1111SA0 .
SV?	Notification via SMS during an alarm (SV1 - enable, SV0 - disable). Example: 1111SV1 .
ST?	Notification via SMS for any system troubles (ST1 - enable, ST0 - disable). Example: 1111ST0 .
SC?	Notification via a phone call during an alarm (SC1 - enable, SC0 - disable). Example: 1111SC1 .
SM?	Mandatory notification via a phone call during an alarm (SM1 - enable, SM0 - disable). Example: 1111SM0 .
SP?	Test notifications via SMS (SP1 - enable, SP0 - disable). Example: 1111SP1 .
SL?	Periodic test schedule (SL1 - every day, SL2 - every two days, SL3 - every three days, SL4 - every four days). Example: 1111SL1 .
SF?	Forward SMS with unknown text to the user (SF1 - enable, SF0 - disable). Example: 1111SF0 .
SK?	Arm / disarm the system with a CLIP (SK1 - enable, SK0 - disable). Example: 1111SK0 .

Phonebook settings	
SN?	Add a new phone number under the chosen phonebook position (SN1 - SN5). Example: 1111SN1370000000 - the phone number must be entered in the international format, "+" sign is added automatically.
SR?	Delete a phone number from a chosen phonebook position (SR1 - SR5). Example: 1111SR1 .
SI	Get SMS with all saved numbers in the phonebook. Example: 1111SI .
SH0	Answer all phone numbers. Example: 1111SH0 .
SH1	Answer only phone numbers saved in the phonebook. Example: 1111SH1 .

**Attention:** To edit a phonebook simply enable service mode by sending SMS with a SERVICEYES text command, or go to alarm system's keypad, select service mode in the menu, and enable the service mode with a PIN code.

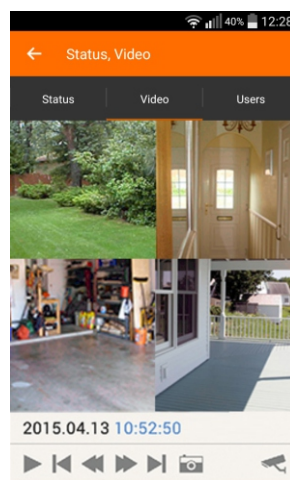
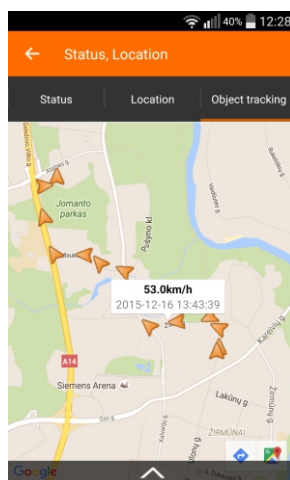
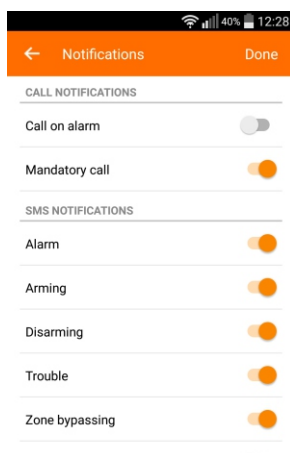
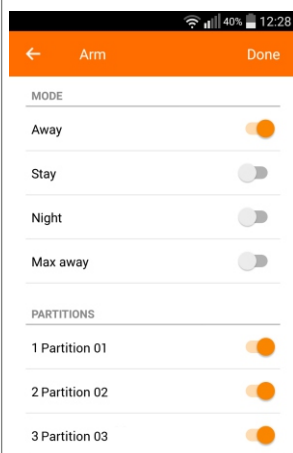
## Smartphone application



SECOLINK PRO application allows the user to control and monitor SECOLINK security system directly from the smartphone. Intruder alarm system and car alarm system can be both controlled by the application. Application uses SMS and/or data service, therefore charges may apply.

### Main features:

- ◆ Arm/disarm your object;
- ◆ Receive alarm, trouble and other notifications;
- ◆ Monitor your object status;
- ◆ Bypass zones;
- ◆ Control your devices;
- ◆ Locate your car (GSW-CAN);
- ◆ Explore the event log: alarms, troubles, and other events;
- ◆ Control up to 4 objects (home, business, car);
- ◆ Video to verify an alarm;
- ◆ Smart interface - most recently used commands.



Links to download:  
for iPhone:



for Android:

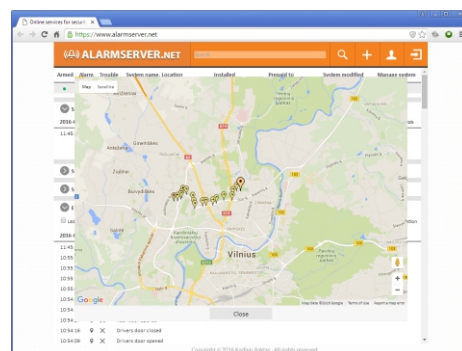
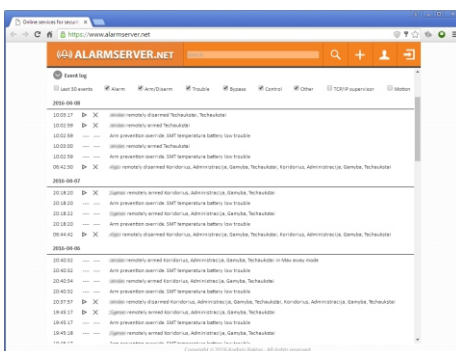
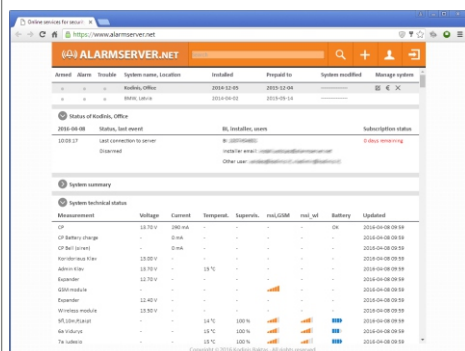


## Online services for security systems - www.alarmserver.net

ALARMSEVER.NET is based on machine to machine technology that allow both, alarm system (intruder or car alarm) and server, to communicate. Security system devices send its status or technical information automatically or manually by request. Communication with server uses a data transfer service, therefore charges may apply.

### Main features:

- ◆ The end user is able to remotely monitor up to 5 security systems;
- ◆ All protected property with the intruder or car alarm system can be monitored with one user's account;
- ◆ The server can store the system event log, technical information, videos to verify alarms, car tracking information, and motion event log that monitors a presence, for example, an elderly family member in a summer house;
- ◆ System user can login to the server from any place in the world where internet connection is available;
- ◆ The user can check wireless sensor's communication data and precisely evaluate system security level. This can only be done if wireless sensors are installed;
- ◆ An installer can examine system status and with user's permission update system configuration.



## System compliance and warranty



Kodinis Raktas UAB, manufacturer of SECOLINK Intruder Alarm System, offers a Warranty for a term of twenty-four months. It declares, that products GSVU and GSV6U comply with essential EU directives and EU standards EN 50131-1, Grade 1 for GSVU, Grade 2 for GSV6U, Environmental Class II; EN 50136-1; EN 50136-2; EN 50131-10. For more information visit manufacturer's website at [www.kodinis.lt](http://www.kodinis.lt) or [www.secolink.eu](http://www.secolink.eu) for a complete text of declaration. SECOLINK Intruder Alarm System is designed and manufactured in Lithuania.